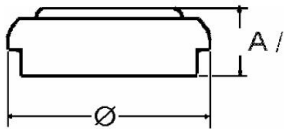


Type Number..... 4626
Designation IEC..... LR9
System..... Manganese Dioxide/
 Zinc/KOH-Electrolyte



Nominal Voltage..... 1.5V
Typical Capacity C..... 150 mAh



Temperature Ranges min max.
Storage..... -10°C 65°C
Discharge..... -10°C 65°C

Dimensions min max.
Diameter..... 15,20 16,00
Height (A/B)..... 5,60 6,20

Typical Capacities (at 20°C)

Discharge Type	Load	End Voltage:	0.9V
Continuous 24h/d, 7d/w	390 Ω	Time: Capacity:	43 h 150 mAh

All Data contained herein is for single cells
 For battery applications, performance data may vary from single cell data, depending on specific battery configuration

No publication or circulation of data to third parties without consent of VARTA Consumer Batteries